

Characteristics

**Direct Operated Proportional DC Valve
Series D1FB**

The proportional directional valves D1FB (NG06) are available with and without onboard electronics (OBE).

D1FB OBE:

The digital onboard electronics is situated in a robust metal housing, which allows the usage under rough environmental conditions.

The nominal values are factory set. The cable connection to a serial RS232 interface is available as accessory.

D1FB for external electronics:

The parameters can be saved, changed and duplicated in combination with the digital power amplifier PWD00A-400.

The valve parameters can be edited with the common ProPxD software for both versions.

The D1FB valves can be ordered with spool/sleeve design (D1FB*0) for maximum precision as well as spool/body design (D1FB*3) for high nominal flow - see functional limit curves for maximum flow capability.

Technical Features

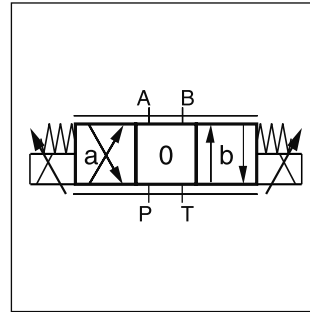
- Spool/sleeve and spool/body
- 3 command options for D1FB OBE:
+/- 10V, 4...20mA, +/- 20mA
- High repeatability from valve to valve
- Low hysteresis
- Manual override
- Digital onboard electronics
- Zero lap spools for the usage of simple closed loop systems



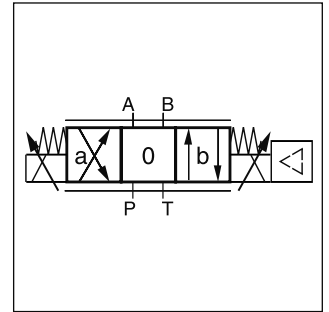
D1FB



D1FB OBE



D1FB

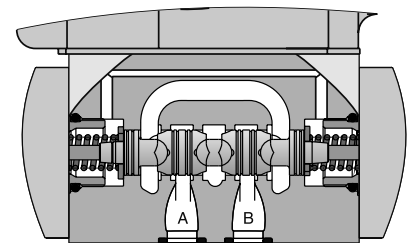
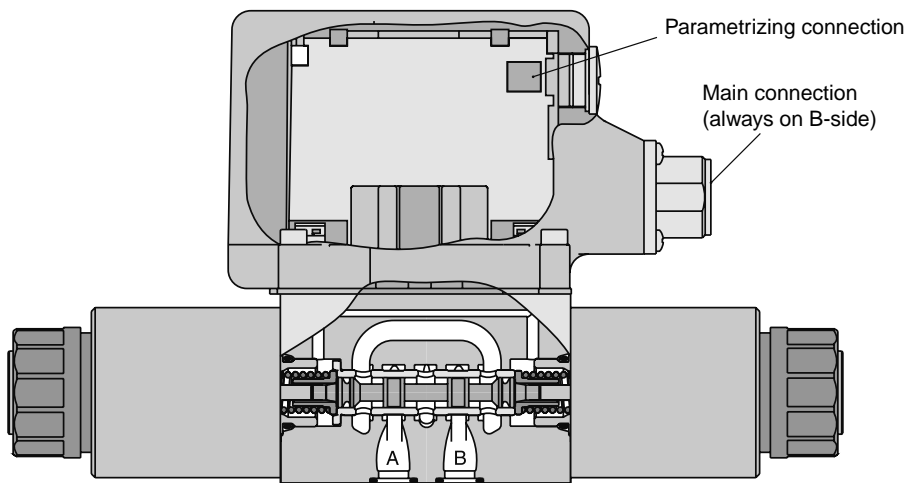


D1FB OBE

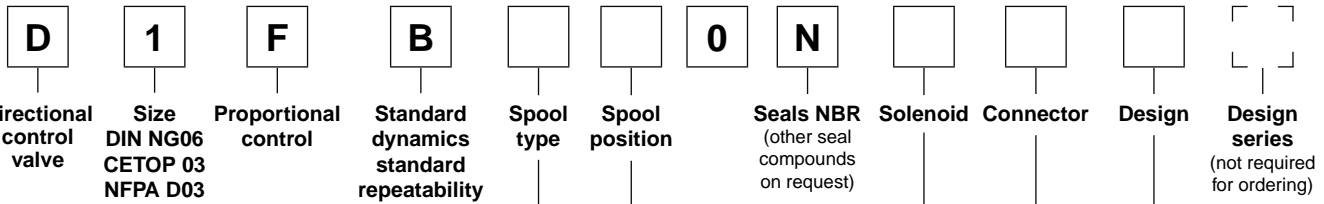
3

D1FB*0 OBE
Spool/sleeve design

D1FB*3 OBE
Spool/body design



D1FB



3

D1FB*0: Spool/sleeve design		
Overlap		
Code	Spool type	Flow [l/min] at Δp 5bar per metering edge
E01H E01F E01C		20 12 6
E02H E02F E02C		20 12 6
E03H E03F E03C		20 12 6
B31H B31F	$Q_B = Q_A / 2$ 	20 / 10 12 / 6
B32H B32F	$Q_B = Q_A / 2$ 	20 / 10 12 / 6
Zero lap ¹⁾		
Code	Spool type	Flow [l/min] at Δp 35bar per metering edge
E50H E50F E50C		20 12 6
B60H B60F	$Q_B = Q_A / 2$ 	20 / 10 12 / 6

D1FB*3: Spool/body design		
Overlap		
Code	Spool type	Flow [l/min] at Δp 5bar per metering edge
E01K E01H E01F		30 20 10
E02K E02H E02F		30 20 10

Code	Design
0	Spool/sleeve design
3	Spool/body design

Code	Connector
W*	Connector as per EN 175301-803
J*	Connector DT04-2P "Deutsch"

D1FB*0: Spool/sleeve design	
Code	Solenoid
M	9V/2.7A
J	24V/0.8A

D1FB*3: Spool/body design	
Code	Solenoid
K	12V / 2.2A
J	24V / 1.1A

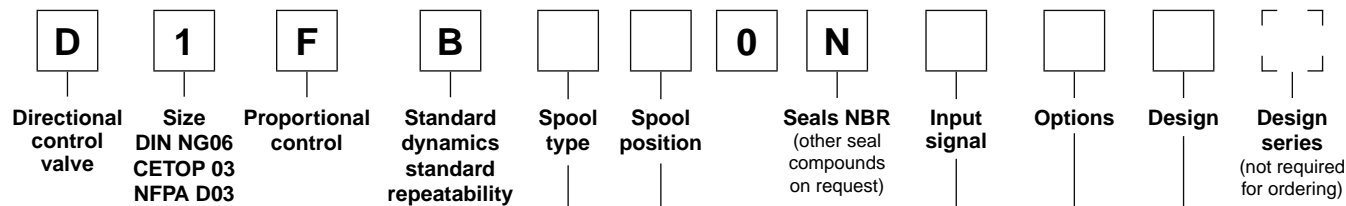
Code	Spool position
C	
E	
K	

¹⁾ only for spool position code C
 No defined spool positioning at power down

* Please order connector separately.
 See chapter 3 accessories.

**Bold letters =
 Short-term availability**

D1FB OBE (with onboard electronics)



D1FB*0: Spool/sleeve design		
Overlap		
Code	Spool type	Flow [l/min] at Δp 5bar per metering edge
E01H E01F E01C		20 12 6
E02H E02F E02C		20 12 6
E03H E03F E03C		20 12 6
B31H B31F	$Q_B = Q_A / 2$ 	20 / 10 12 / 6
B32H B32F	$Q_B = Q_A / 2$ 	20 / 10 12 / 6
Zero lap ¹⁾		
Code	Spool type	Flow [l/min] at Δp 35bar per metering edge
E50H E50F E50C		20 12 6
B60H B60F	$Q_B = Q_A / 2$ 	20 / 10 12 / 6

Code	Design
0	Spool/sleeve design
3	Spool/body design

Code	Input signal ¹⁾	Function	Port	Options
F0	0...+/-10V	0...+10V > P-A	6 + PE	Potentiometer supply
G0	0...+/-20mA	0...+20mA > P-A	6 + PE	—
S0	4...20mA	12...20mA > P-A	6 + PE	—
W5 ²⁾	0...+/-10V 4...20mA	0...+10V > P-A 12...20mA > P-A	11 + PE	Potentiometer supply & command preset channel

¹⁾ single solenoid always 0...+10V respectively 4...20 mA

²⁾ Factory set \pm 10V on delivery

Code	Spool position
C	
E	
K	

D1FB*3: Spool/body design		
Overlap		
Code	Spool type	Flow [l/min] at Δp 5bar per metering edge
E01K E01H E01F		30 20 10
E02K E02H E02F		30 20 10

¹⁾ only for spool position code C
 No defined spool positioning at power down

Please order connector separately.
 See chapter 3 accessories.

Parametrizing cable OBE → RS232
 Item no. 40982923

Bold letters =
 Short-term availability

3

General			
Design	Direct operated proportional DC valve		
Actuation	Proportional solenoid		
Size	NG06/CETOP 03/NFPA D03		
Mounting interface	DIN 24340 / ISO 4401 / CETOP RP121 / NFPA		
Mounting position	unrestricted		
Ambient temperature	[°C]	-20...+60	
MTTF _D value (OBE)	[years]	150 (75)	
Weight (OBE)	[kg]	2.2 (2.9)	
Vibration resistance	[g]	10 Sinus 5...2000 Hz acc. IEC 68-2-6 30 Random noise 20...2000 Hz acc. IEC 68-2-36 15 Shock acc. IEC 68-2-27	
Hydraulic			
Max. operating pressure	[bar]	Ports P, A, B 350; Port T 210	
Max. pressure drop PABT / PBAT	[bar]	350	
Fluid	Hydraulic oil as per DIN 51524...535, other on request		
Fluid temperature	[°C]	-20...+60	
Viscosity permitted	[cSt] / [mm ² /s]	20...380	
Viscosity recommended	[cSt] / [mm ² /s]	30...80	
Filtration	ISO 4406 (1999) 18/16/13 (meet NAS 1638: 7)		
Nominal flow at Δp=5bar per control edge *	[l/min]	D1FB*0 (Spool/sleeve)	D1FB*3 (Spool/body)
		6 / 12 / 20	10 / 20 / 30
Leakage at 100 bar	[ml/min]	<50 (overlapped spool); <400 (zerolapped spool)	
Overlap	[%]	25, electrically normalized at 10 (see flow characteristics)	
Static / Dynamic			
Step response at 100% step	[ms]	30	30
Hysteresis	[%]	<4	<6
Temperature drift solenoid current	[%/K]	<0.02	
Electrical characteristics			
Duty ratio	[%]	100	
Protection class	Standard (as per EN175301-803) IP65 in accordance with EN60529 (with correctly mounted plug-in connector) DT04-2P "Deutsch" IP69K (with correctly mounted plug-in connector)		
Solenoid		Code "M"	Code "K" Code "J" (Spool/sleeve)
Supply voltage	[V]	9	12 24
Current consumption	[A]	2.7	2.2 1.1 (0.8)
Resistance	[Ohm]	2.7	4.4 18.6
Coil insulation class	F (155 °C)		
Solenoid connection	Connector as per EN 175301-803 (code W), DT04-2P "Deutsch" connector (code J). Solenoid identification as per ISO 9461.		
Wiring min.	[mm ²]	3x1.5 (AWG 16) overall braid shield (Code W), "Deutsch" connector DP4 2-Pin (Code J)	
Wiring length max.	[m]	50	

* Flow rate for different Δp per control edge:

$$Q_x = Q_{Nom.} \cdot \sqrt{\frac{\Delta p_x}{\Delta p_{Nom.}}}$$

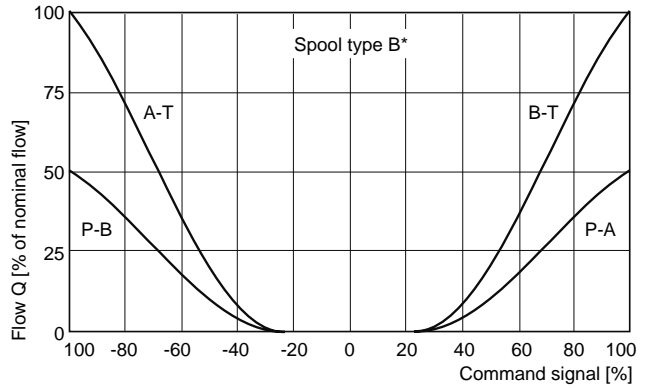
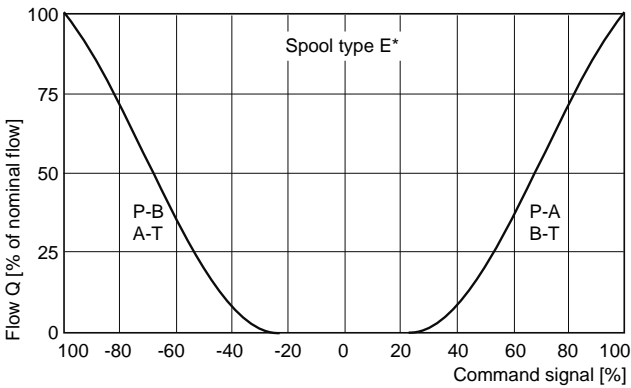
Electrical characteristics OBE		
Duty ratio	[%]	100
Protection class		IP65 in accordance with EN 60529 (with correctly mounted plug-in connector)
Supply voltage/ripple DC	[V]	18...30, ripple < 5% eff., surge free
Current consumption max.	[A]	2.0
Pre fusing medium lag	[A]	2.5
Input signal		
Codes F0 & W5 voltage	[V]	+10...0...-10, ripple < 0.01 % eff., surge free, Ri = 100kOhm, 0...+10V ⇒ P -> A
Codes S0 & W5 current	[mA]	4...12...20, ripple < 0.01 % eff., surge free, Ri = 200Ohm, 12...20mA ⇒ P -> A < 3.6 mA = enable off, > 3.8 mA = enable on (acc. to NAMUR NE43)
Code G0	[mA]	+20...0...-20, ripple < 0.01 % eff., surge free, Ri = 200Ohm, 0...+20mA ⇒ P -> A
Differential input max.		
Codes F0, G0 & S0	[V]	30 for terminal D and E against PE (terminal G) 11 for terminal D and E against 0V (terminal B)
Code W5	[V]	30 for terminal 4 and 5 against PE (terminal PE) 11 for terminal 4 and 5 against 0V (terminal 2)
Channel recall signal	[V]	0...2.5: off / 5...30: on / Ri = 100 kOhm
Adjustment ranges		
Min	[%]	0...50
Max	[%]	50...100
Ramp	[s]	0...32.5
Interface		RS 232, parametrizing connection 5pole
EMC		EN 61000-6-2, EN 61000-6-4
Central connection		
Codes F0, G0 & S0		6 + PE acc. to EN 175201-804
Code W5		11 + PE acc. to EN 175201-804
Wiring min.		
Codes F0, G0 & S0	[mm ²]	7 x 1.0 (AWG16) overall braid shield
Code W5	[mm ²]	11 x 1.0 (AWG16) overall braid shield
Wiring length max.		50

3

Flow characteristics

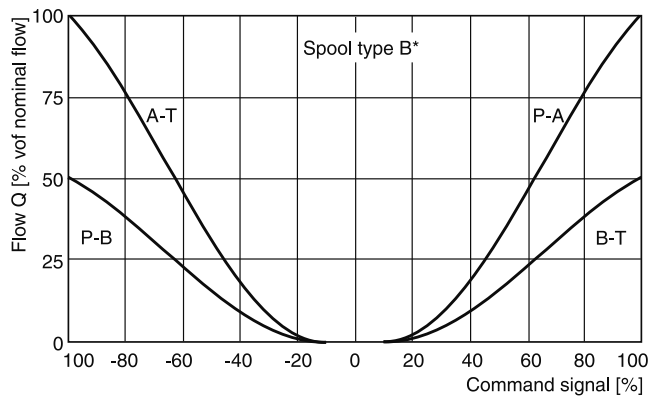
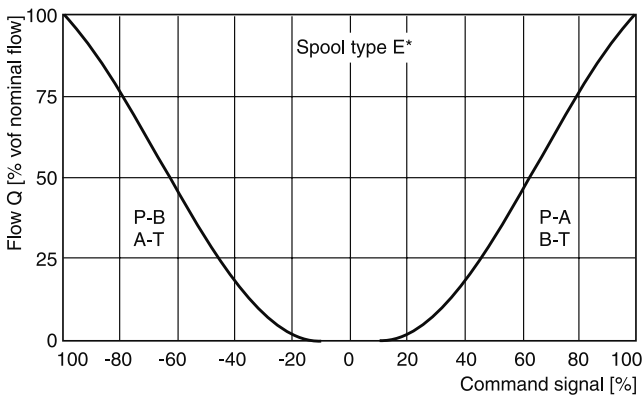
D1FB*0

at $\Delta p = 5$ bar per metering edge
 Spool type E01/02/03, B31/32



D1FB*0 OBE

(electrically set to opening point 10%)
 at $\Delta p = 5$ bar per metering edge
 Spool type E01/02/03, B31/32



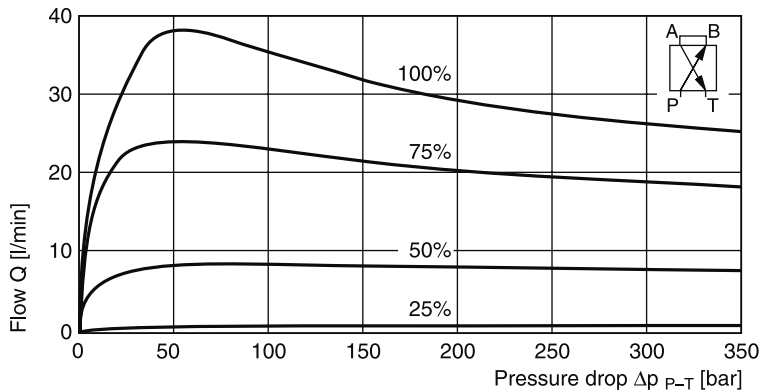
All characteristic curves measured with HLP46 at 50°C.

Functional limits

at 25%, 50%, 75% and 100% command signal
 (symmetric flow)

At asymmetric flow a reduced flow limit has to be considered – typically approx. 10% lower.

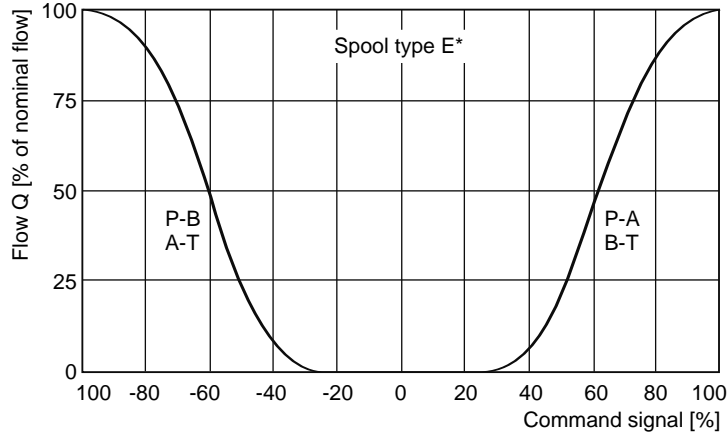
Spool type E01H



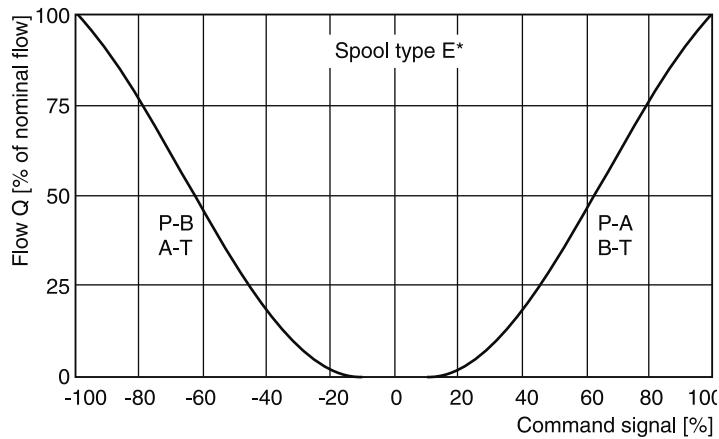
All characteristic curves measured with HLP46 at 50°C.

Flow characteristics
D1FB*3

at $\Delta p = 5$ bar per metering edge
 Spool type E01/02



D1FB*3 OBE
 (Electrically set to opening point 10%)
 at $\Delta p = 5$ bar per metering edge
 Spool type E01/02



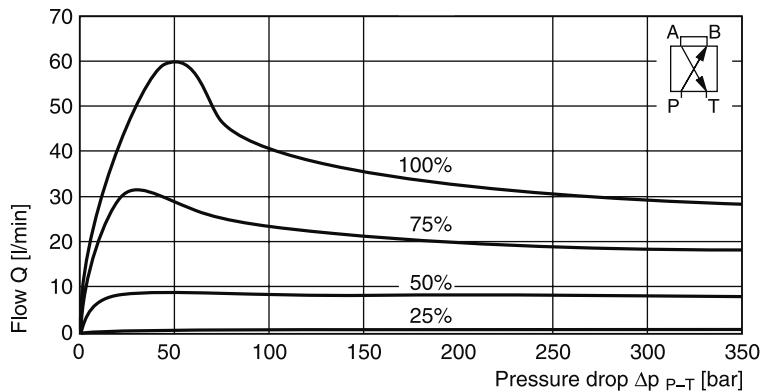
All characteristic curves measured with HLP46 at 50°C.

Functional limits

at 25%, 50%, 75% and 100% command signal
 (symmetric flow)

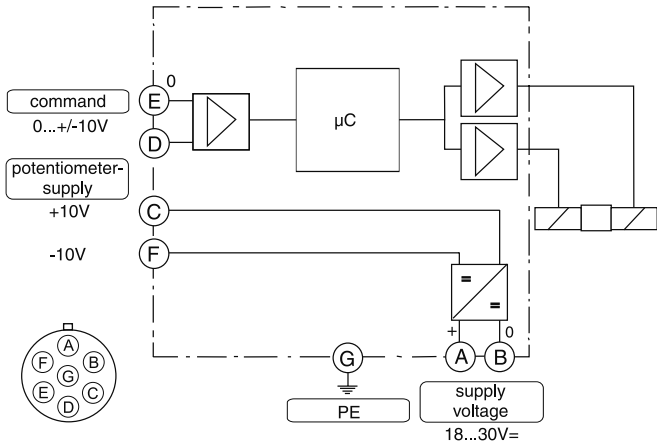
At asymmetric flow a reduced flow limit has to be considered – typically approx. 10% lower.

Spool type E01K

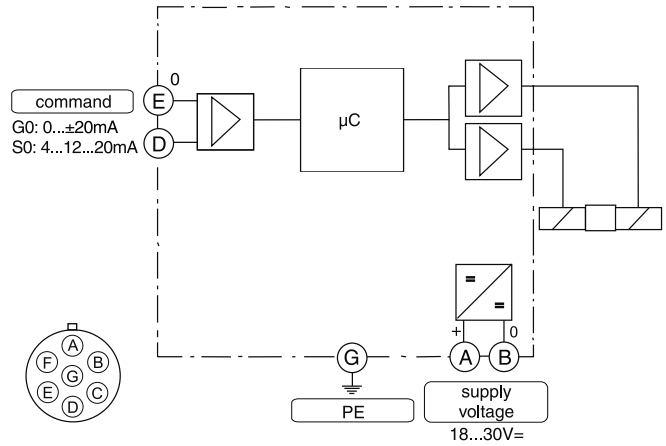


All characteristic curves measured with HLP46 at 50°C.

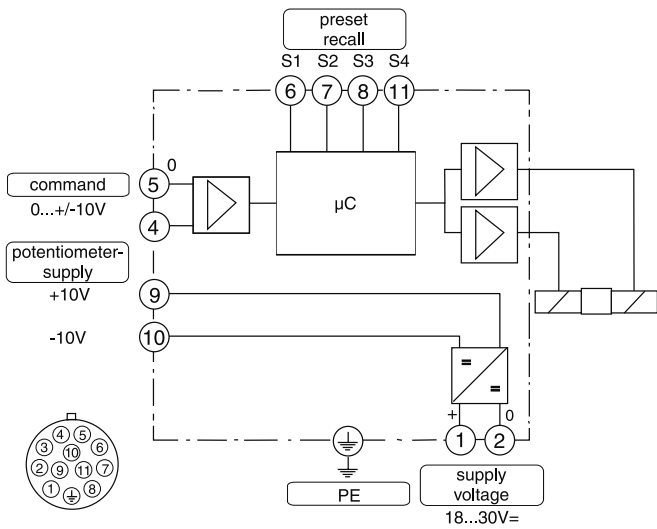
Code F0
 6 + PE acc. to EN 175201-804



Code G0, S0
 6 + PE acc. to EN 175201-804



Code W5
 11 + PE acc. to EN 175201-804



3

D1FB OBE

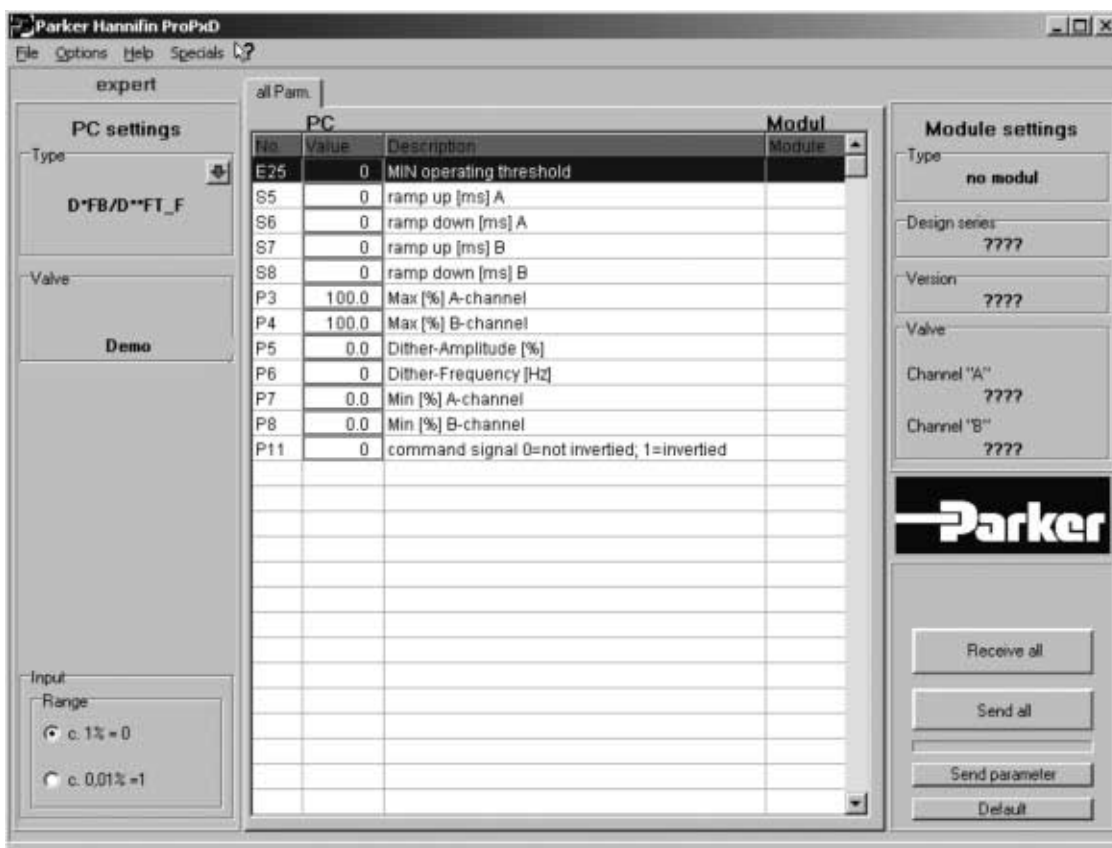
ProPxD interface program

The ProPxD software permits comfortable parameter setting for the module electronics. Via the clearly arranged entry mask the parameters can be noticed and modified. Storage of complete parameter sets is possible as well as printout or record as a text file for further documentation. Stored parameter sets may be loaded anytime and transmitted to other valves. Inside the electronics a non-volatile memory stores the data with the option for recalling or modification.

Features

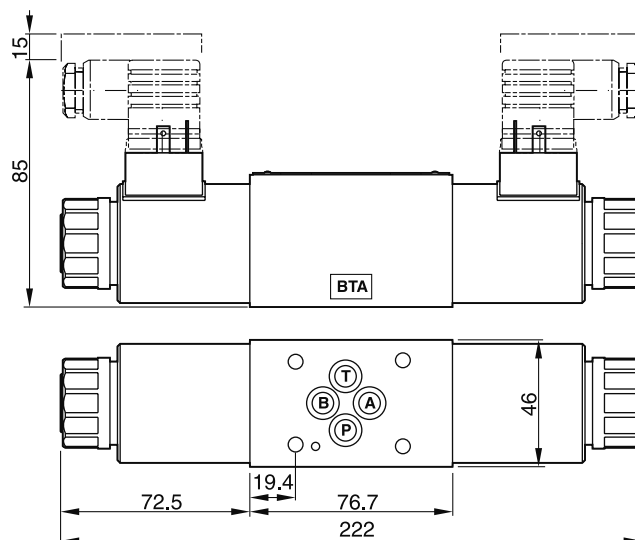
- Comfortable editing of all parameters
- Depiction and documentation of parameter sets
- Storage and loading of optimized parameter adjustments
- Executable with all actual Windows® operating systems from Windows® 95 upwards
- Plain communication between PC and electronics via serial interface RS-232.
- Comfortable PC user software, free of charge:
www.parker.com/euro_hcd
 – see "Support"

3

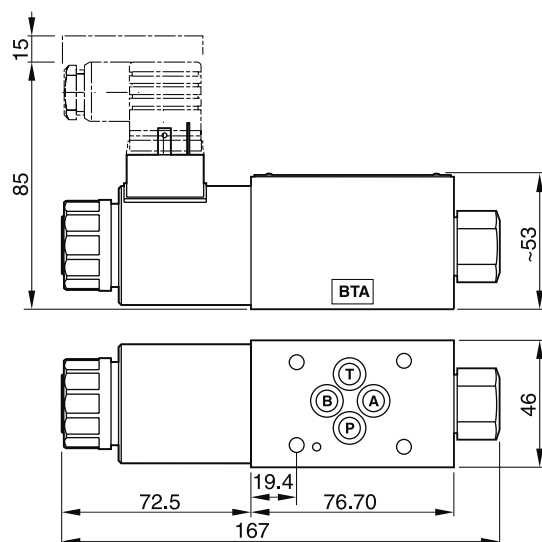


The parametrizing cable may be ordered under item no. 40982923.

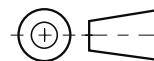
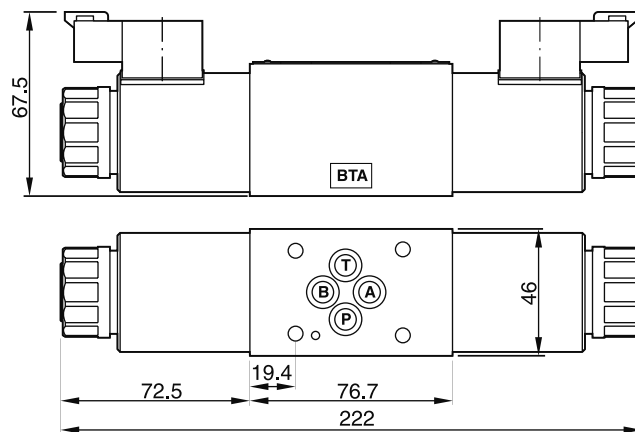
D1FB*C



D1FB*K

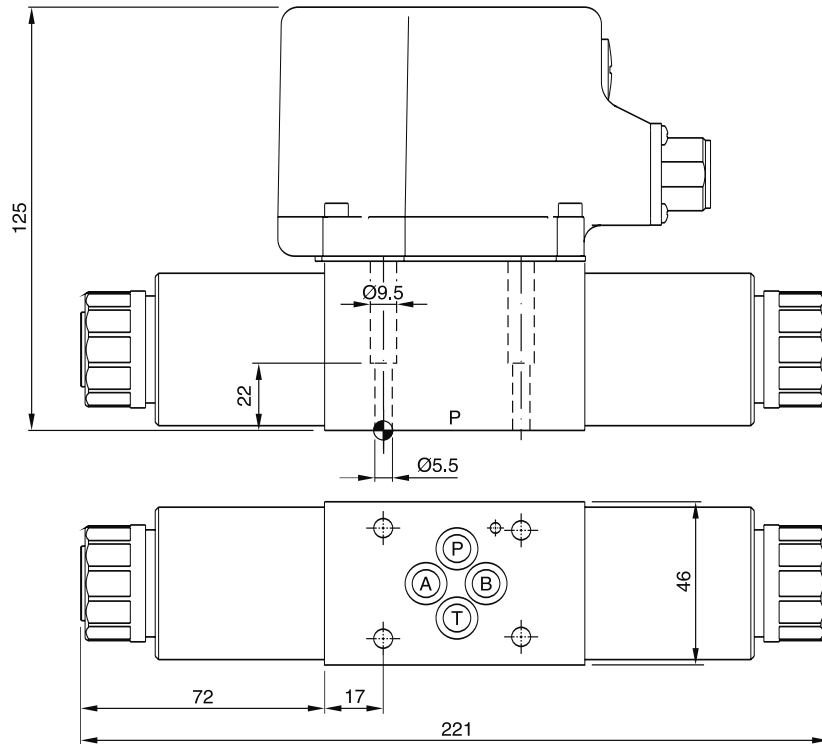


**D1FB*C with DT04-2P
 "Deutsch" connector
 (only C style shown)**

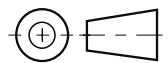
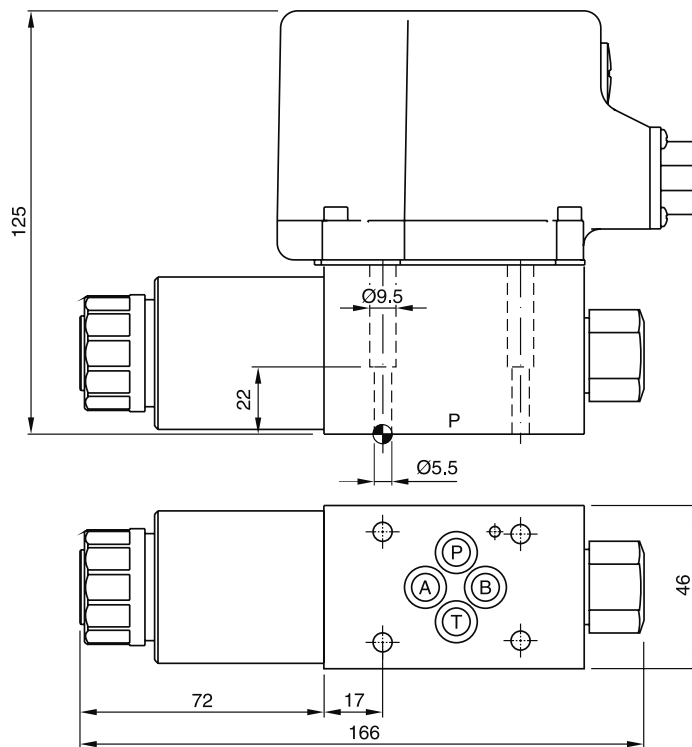






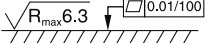
Surface finish	Kit	Kit	Kit	Kit NBR
	BK375	4x M5x30 DIN 912 12.9	7.6 Nm ±15%	SK-D1FB-N

D1FB*C OBE



D1FB*E OBE



Surface finish	 Kit			 Kit NBR
	BK375	4x M5x30 DIN 912 12.9	7.6 Nm ±15%	SK-D1FB-N

D1FB UK.INDD RH 07.09.2011

