

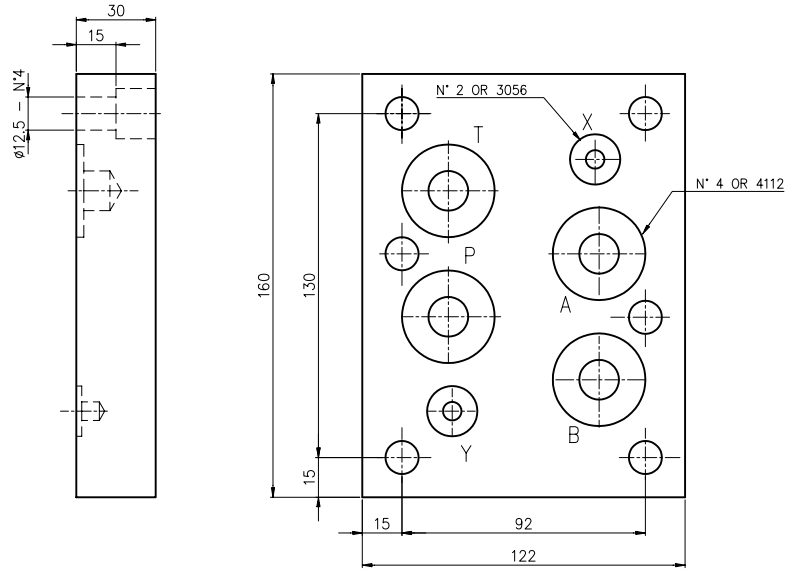
**END PLATE EB108 AND REDUCTION PLATE EB408**  
**GRUNDPLATTE EB108 UND REDUKTIONSPLATTE EB408**

CETOP8 End plate.

Weight = 4 Kg

CETOP8 Endplatte.

Gewicht = 4 Kg



Ordering code / Bestelle-Code:

EB1 0 8

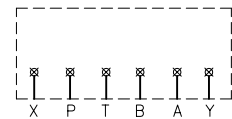
EUROFLUID

End plate / Endplatte = B1

Hight / Höhe = 30mm = 0

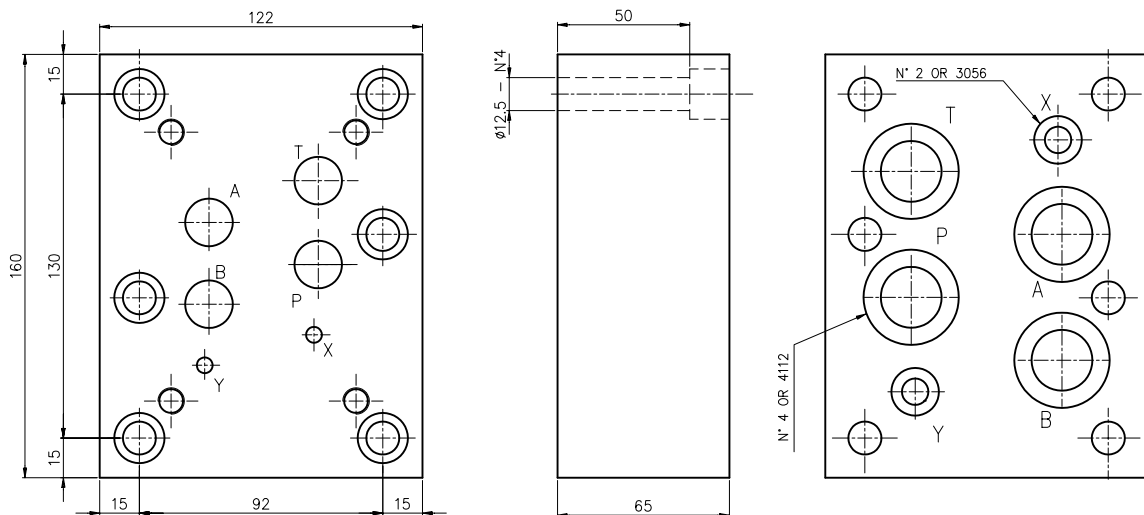
CETOP 8

Hydr. symbol  
 Symbol



CETOP8/CETOP7 reduction plate . Weight = 9 Kg

CETOP8/CETOP7 Reduktionsplatte . Gewicht = 9 Kg



Ordering code / Bestelle-Code:

EB4 0 8

EUROFLUID

reduction platte = B4  
 Reduktionsplatte

P-T-B-A  
 reduced / reduziert = 0

CETOP 8

Hydr. symbol  
 Symbol

